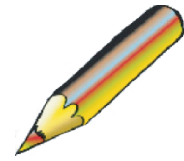


Ringlein, Ringlein, du musst wandern

Traditional



8 \bar{V} C G C C

Ring - lein, Ring - lein, du musst wan - dern, von dem ei - nen

8 G C C Am Dm G

zu dem an - dern; das ist schön, das ist schön,

8 C Dm G⁷ C

lasst das Ring - lein nur nicht sehn!

Detailed description: This block contains three staves of musical notation for the song 'Ringlein, Ringlein, du musst wandern'. The first staff starts with a treble clef, a 2/4 time signature, and a key signature of one sharp (F#). It features a series of chords: C, G, C, and C. The second staff continues with chords G, C, C, Am, Dm, and G. The third staff concludes with chords C, Dm, G7, and C. Fingerings are indicated by numbers 1-4, and some notes are highlighted in red or green. A small '8' is placed below the first staff, and a 'V' with a bar over it is above the first measure. The lyrics are written below the notes.